

# MIX MAX

Bone Cement & Mixing System

## How to operate

- 1 Open the package.
- 2 Open the lid of the cement mixer.
- 3 Pour medical bone cement into container of cement mixer.
- 4 Close the lid of the open cement mixer.
- 5 Mix the cement.
- 6 Open the cement mixer.
- 7 Remove the mixed cement with spatula.

## Caution

Disposable products must be treated with medical waste after use.



Efficiency  
High quality  
Ergonomic Design

# MIX MAX

## Bone Cement & Mixing System

We have been able to develop the new upgraded PMMA Bone Cement and mixing device. By using this, the efficiency of surgery can be increased.



### Indications

Severely painful osteoporotic compression fractures painful vertebral body tumors (metastasis or myeloma) Symptomatic Vertebral Hemangioma

### Features

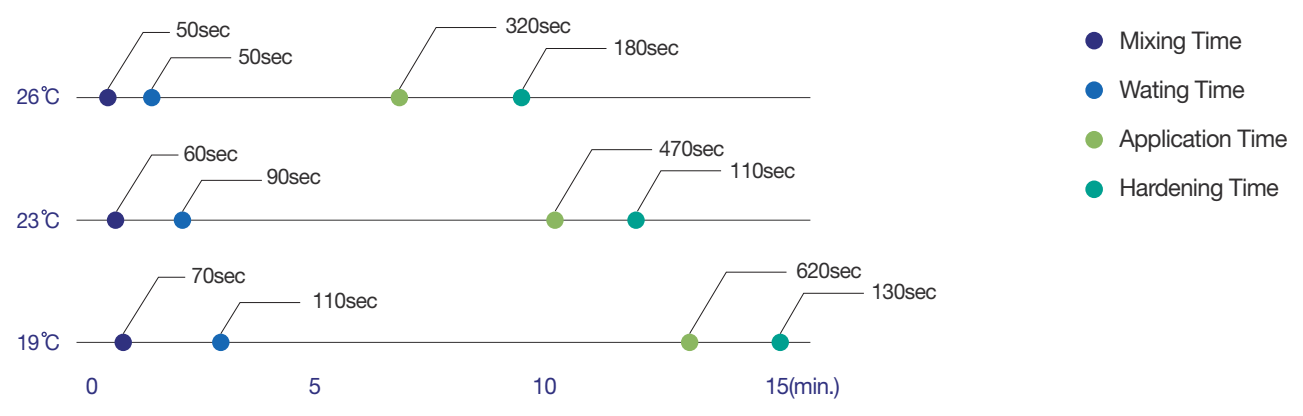
High radiopaque cement includes 60% of ZrO2 Optimized viscosity for Vertebroplasty and Kyphoplasty short mixing and preparing time allows to inject the cement immediately Good mechanical properties



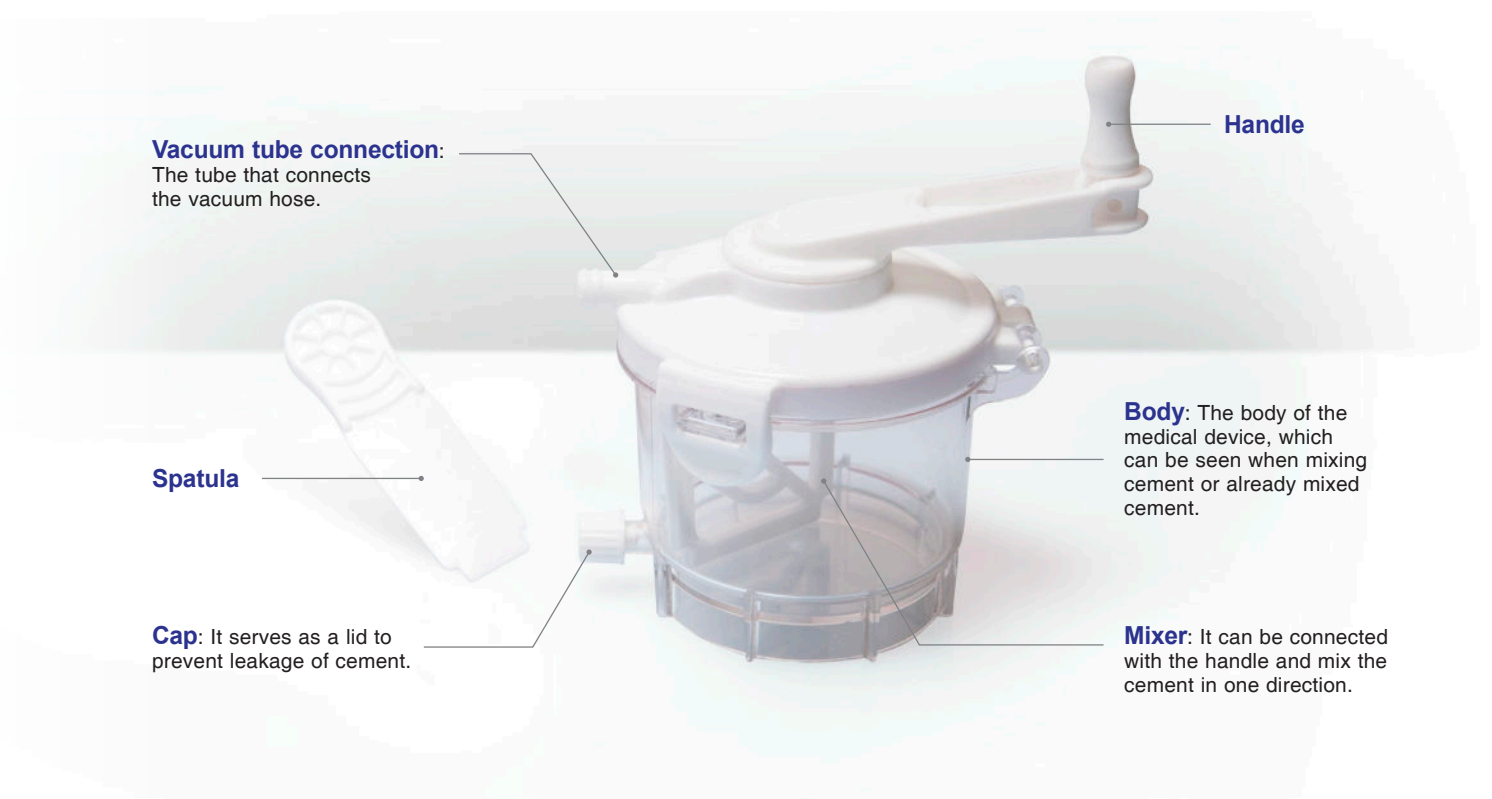
### Feature

- **Ergonomic Design** Ergonomic design allows easy mixing.
- **Efficiency** Waste of cement can be minimized by using spatula.
- **High quality** The cement density can be increased by mixing in vacuum.

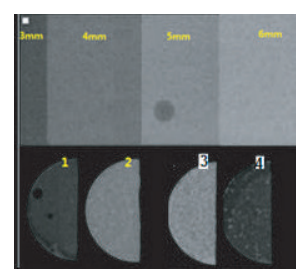
### Chart of handling time at Various Temperature



"Fig.1 : Times shown in the chart were obtained by 2 hours storage at 20° before use condition"



### High radiopacity property



Pic 1 shows the Al step-wedge by 3, 4, 5, 6mm and below Pic shows the brightness of each product which can be compared to Al step-wedge

The following table shows the radiopacity property of MixMax cement, NTCem Spine (old version), and two other brands.

No	Products Name	Contrast agent name and amount added	Al(mm)
1	NTCem Spine	ZrO2 30%	2.2
2	<b>MixMax</b>	<b>ZrO2 30%</b>	<b>4.6</b>
3	"B" brand	ZrO2 30%	4.7
4	"S" brand	BaSO4 30%	2.4

### Ordering Information

	Model	Bone Cement	Cement Mixer
1	SWMX-MS-02	SWMX-BM-01	SWMX-CMS-02